

1/10TH SCALE ELECTRIC OFF-ROAD BUGGY/SHORT COURSE/DESERT BUGGY TRUCK/TRUGGY/MONSTER TRUCK HUMMER/RALLY CAR

SHORT COURSE
ITEM NO.E10SC
E10SCL



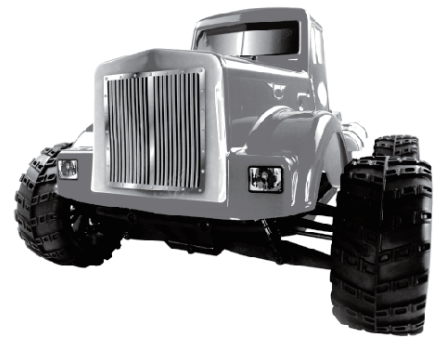
BUGGY
ITEM NO.E10XB
E10XBL



DESERT BUGGY
ITEM NO.E10DB
E10DBL



MONSTER TRUCK
ITEM NO.E10BP
E10BPL



TRUGGY
ITEM NO.E10XT
E10XTL



TRUCK
ITEM NO.E10MT
E10MTL



RALLY CAR
ITEM NO.E10XR
E10XRL



HUMMER
ITEM NO.E10HM
E10HML



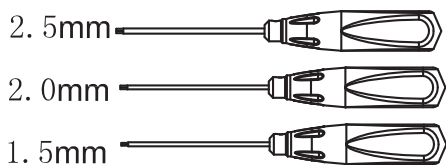
Before You Start Assembling

Thank you for purchasing our Ready To Run 1/10 scale electric off-road vehicle. This manual contains the basic methods of operation, assembly details, and related accessories. Operators less than 14 years of age need to be supervised by an adult. Please read all information in this manual before operation to avoid any damage or danger.

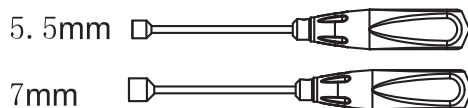
All operating instructions should be read before the use of this product. It contains important information for future reference. In addition, because we constantly update our products, some small physical features may change. Check our website for any update on changes.

Tools Needed

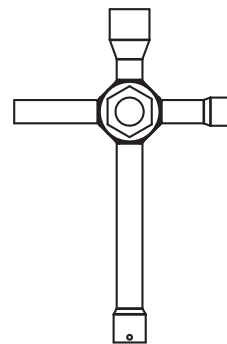
2.5 2.0 1.5 Allen key



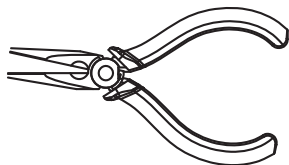
5.5 7Wrench



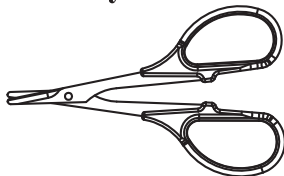
Cross Wrench(big)



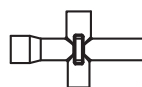
Needle Nose Plier



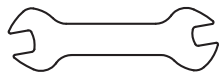
Hobby Scissors



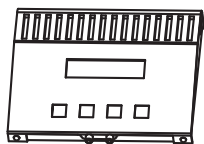
Cross Wrench(small)



5.5mm Open end wrench



Charger



Reamer



Apply CA glue



Grease



1.2V AA Battery



Silicone Oil



Safety Precautions

This is a high-quality radio control model. Pay attention at all times to insure careful operation. If care is not taken, loss of life and property may result. Children should not be allowed to operate in the absence of adult supervision. Operational errors, or the incorrect use of this product and important information included in this manual (which may result in the loss of life, severe injury or property damage), will be the responsibility of the owner.

-----This model is controlled by radio signals, which may be subject to outside interference beyond the control of vehicles radio system.

-----Therefore, keep within a safe distance to avoid accidents and away from motor vehicles and people.

-----Do not place or run on wet grass or in puddles because electronic equipment (servers, receivers and power transfer) is not waterproof. If you want to run in these areas the electronics must be waterproofed.

-----Do not drive if battery power is low!

-----Do not drive in poor conditions or vehicle damage may occur.

-----Be careful to comply with the instructions and warnings of other equipment used (charger and battery, etc.).

-----Put chemicals, metals, and electronic equipment out of the reach of children.

-----Only careful and cautious use of remote control cars can protect life and property from harm.

Warranties

Ask retailers for replacement or return for manufacturing defective or missing parts. There is no warranty against wear and tear caused by incorrect operation or use of incorrect parts.

Retailers are to provide technical assistance free of charge for beginners.

Operational Requirements

First, make sure batteries are fully charged. Check all connections and settings .

Install 8AA batteries in the remote, ensure that the batteries have full power, pay attention to positive and negative polarity, and do not install in the wrong direction.

The remote control system has a variety of different functions and settings. Before initial use, ensure that all functions and settings have been fully understood.

DIGITAL PROPORTIONAL SYSTEM

2.4GHZ MT-300

SYSTEM FEATURES

- Unique and functional pistol grip transmitter design
- Well balanced for precise control
- Non-slip foam steering wheel
- Well placed digital trim & D/R levers
- Optimum third channel switch location
- Low Battery warning
- Quick Binding and Fail Safe Setup
- High performance micro 3 channel receiver
- NiCd charger jack in transmitter
- Sound Beep

SYSTEM SPECIFICATIONS

Transmitter

Model: MT-300TX

FHSS Output Power: <100mW

Operating Voltage: 4.2V~7V

Power Supply: 4 Cell Alkaline/Ni-Cd/Ni-MH

Weight: 13.9 oz (394 gr) with Alkalines

Frequency/Modulation Type: 2.4GHz FHSS

Receiver

Model: MT-300RX

Frequency: 2.4GHz FHSS

Operating Voltage: 3.6V~7V

Weight: 0.26 oz (7.4gr)

Dimensions: 1.38 x 1 x 0.5 in (35.1 x 25.3 x 13 mm)

Fail Safe: Yes (All Channels)

FEATURES DESCRIPTIONS

Receiver Antenna Wire: The antenna wire receives the transmitter signal. The antenna wire should be installed through a nylon tube (antenna tube) in the vertical position for the best reception.

Auxiliary Channel 3 Switch: Controls Auxiliary Channel 3 High and Low servo travel.

Battery Compartment: Houses the 4 'AA' Alkaline batteries that power the transmitter.

Bind Button: Used in the process of Binding the transmitter and receiver.

Bind LED: Displays the current status of the transmitter and receiver pair.

Steering Dual Rate(D/R): The Dual Rate Keys are used to adjust the Steering Dual Rate quickly and easily during use.

Grip: The Grip is molded in an ergonomic shape for increased comfort, control and feel.

Power Indicator: Indicates that there is Power to the transmitter.

Power Switch: Turns the transmitter ON and OFF.

Steering Trim Lever (CH1): Used to adjust the center Trim of the Steering servo.

Steering Wheel(CH1): Proportionally operates the model's right and left steering control. The Steering Wheel features a molded grip for increased comfort, control and feel.


Throttle Trigger(CH2): Controls the speed of the model, both forward and backward, or the model's brake.

Throttle Trim Lever (CH2): Used to adjust the center Trim of the Throttle servo.

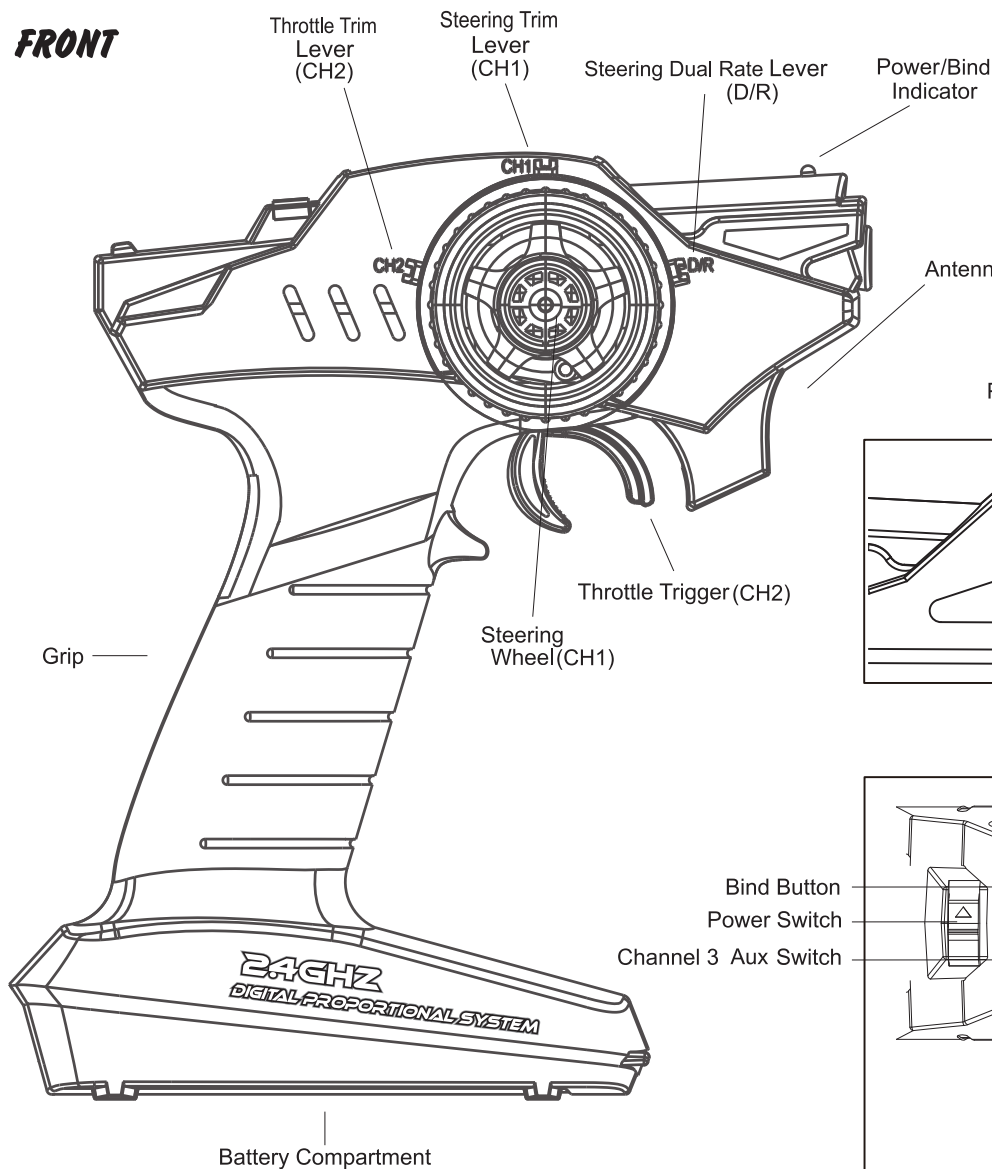
TRANSMITTER AND RECEIVER DIAGRAMS

Use the diagram below to familiarize yourself with the different parts of your **MT-300TX** transmitter and **MT-300RX** receiver.

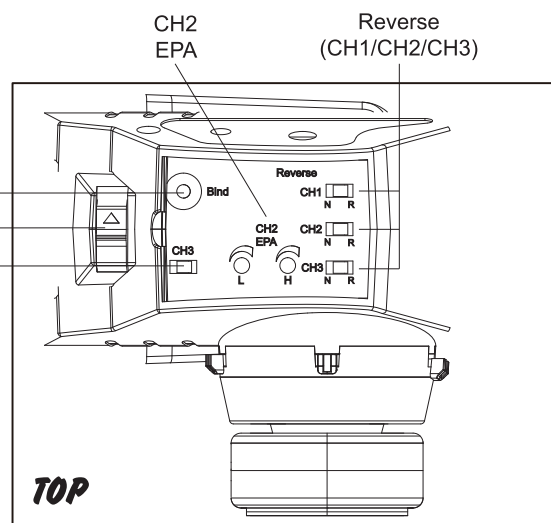
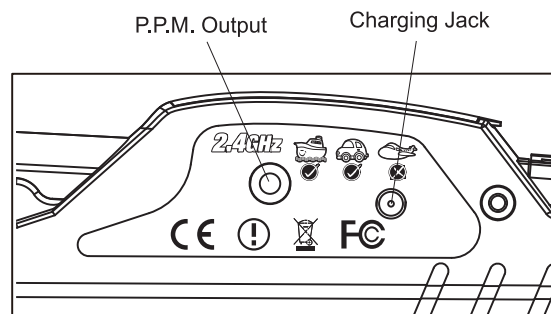
Descriptions of these parts can be found in the transmitter and receiver layout.

 The transmitter antenna is mounted internally and is located in the front portion of the transmitter. When you're driving your model, hold the transmitter so that it's orientated as close to vertical as possible at all times and try not to 'follow' your model with the transmitter. This provides the best RF signal between the transmitter and the receiver. Do NOT cover the front of the transmitter in any way during use! Doing so can block the RF signal, resulting in the loss of control of your model.

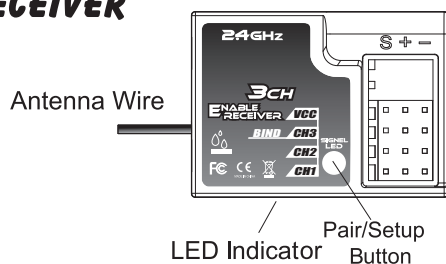
FRONT



BACK



RECEIVER

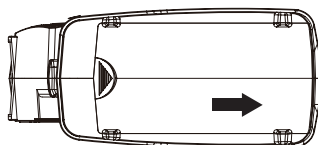


Channel Output

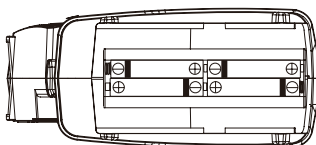
- "1": Steering (CH1)
- "2": Throttle (CH2)
- "3": AUX (CH3)
- "B": Power

TRANSMITTER BATTERY INSTALLATION

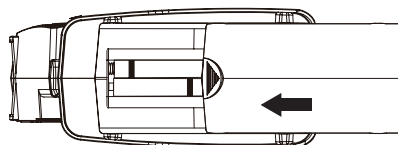
To Open slide cover



Install Batteries



To Close slide cover



1. Press down on the battery cover and slide in the direction of the arrow to remove.
2. Install 4 AA alkaline cells (or Ni-Cd, or Ni-MH) as indicated inside the battery compartment. Make sure to match the polarity (+ and -) as shown in the battery compartment or the transmitter will not function.


3. Install the battery cover in place and slide to close.

WARNING: Improper installation of transmitter batteries can cause serious damage to your system.

RECEIVER CONNECTIONS AND MOUNTING

Use the diagram below to familiarize yourself with how to connect the switch harness, servos (available separately), and the 4 cell battery holder to your **MT-300RX** 3-Channel receiver.

- 1) Install four fresh 'AA' Alkaline batteries into the battery holder, making sure that the polarity is correct. The direction that each battery should be installed is molded into the battery holder (+ Positive and - Negative).


 The **MT-300RX** 3-Channel receiver's Nominal Input Voltage is **3.6v~7v**, therefore, the receiver can be powered using a 4 or 5 cell Ni-Cd or Ni-MH battery pack (available separately).


- We suggest Binding the transmitter and receiver and setting the Fail Safe position, prior to mounting the receiver in your model.

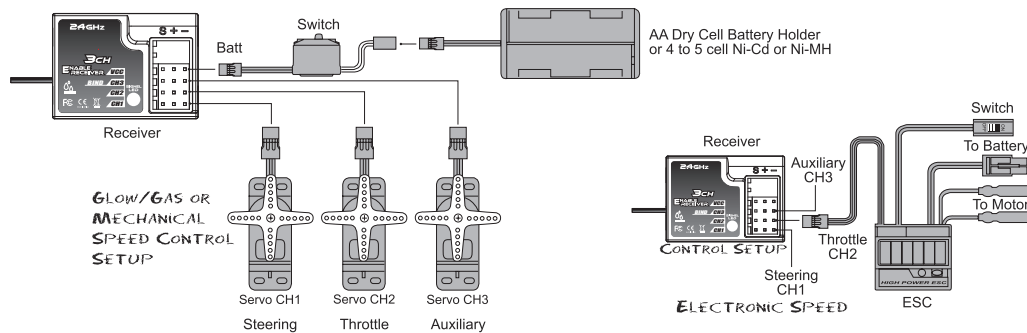
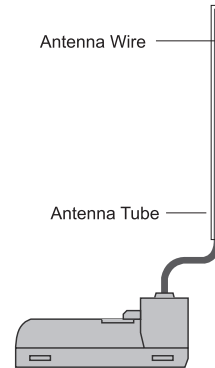
- The receiver should be mounted as far away from any electrical components as possible.

- Route the antenna wire up through a plastic tube so that it is in the vertical position.

- To protect the receiver from vibration and other damage, we recommend wrapping the receiver in shock absorbing foam rubber when installing it in your model.

 Set your model on a stand so the wheels are off the ground before turning on your radio control system or connecting your motor for the first time.

 The receiver does not feature BEC circuitry. If using an electronic speed control, verify that it features BEC circuitry to drop the receiver voltage between 3.6v~7v.



RECEIVER'S ANTENNA INSTALLATION

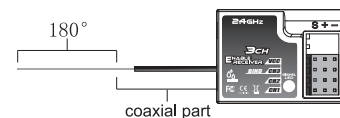
The wave length of the 2.4GHz is much shorter than that of the conventional frequencies, it is very susceptible to loss of signal which results in a receiving error.

To obtain the best results, please refer to the following instructions;

- 1.The antenna must be kept as straight as possible. Otherwise it will reduce the effective range.
- 2.The antenna should be perpendicular to the model. Larger models can have large metal objects that can attenuate the RF signal. In this case the antennas should be placed at sides of the model. Then the best RF signal condition is obtained at any attitude.
- 3.The antennas must be kept away from conductive materials, such as metal and carbon by at least a half inch. The coaxial part of the antennas does not need to follow these guidelines, but do not bend it in a small radius.

- 4.Keep the antennas away from the motor, ESC, and other noise sources as much as possible.

*The main purpose of the photo demonstrates how the antenna should be placed. For actual installation the receiver must be wrapped with a sponge or placed with floating material to protect it from vibration.



The receiver contains precision electronic parts. It is the most delicate radio component on-board the model and should be protected from vibration, shock and temperature extremes. To protect the receiver, wrap it in R/C foam rubber or other vibration-absorbing material. If appropriate, waterproof the receiver by placing it in a plastic bag and closing the open end with a rubber band before wrapping it in foam. If moisture enters the receiver, intermittent operation or a failure may result. Wrapping the receiver in a plastic bag also protects it from fuel and exhaust residue which, in some models, can work its way into the model.

STEERING TRIM(CH1)

Steering neutral adjustments can be made by moving the steering trim lever to the left or right. When you install a servo, always check to be sure the servo is at its neutral position. Adjust the servo horn position and linkage so both are parallel. Be sure the steering trim on the transmitter is at the neutral position.

Trim Operation And Maximum Travel

Changing the trim can affect the overall settings. When adjustments are made with the trims, recheck your installation for maximum travel. (Steering D/R at 100%)

When Trim Usage Is Extreme

If it takes most of your trim movement to get a servo to the neutral position, reposition the servo horn on the servo and inspect your linkage installation.

Steering Trim Lever

L25 - 0 - R25



CH1

THROTTLE TRIM(CH2)

Throttle neutral adjustments can be made by moving the throttle trim lever to the up or down. When using an electronic speed control, set the throttle trim to neutral and make adjustment to the speed control. On a gas powered model, set the trim to neutral and adjust the linkage to the point where the carburetor is fully closed in accordance with the engine instruction manual.

Trim Operation And Travel

Trim adjustments will affect the overall servo travel. Check the brake side (backward) movement when changes are made.

When Trim Movement Is Extreme

If you use most of the trim movement to get the servo to the neutral position, recenter the servo horn closer to the neutral position and inspect your throttle linkage.

Throttle Trim Lever

F25
0
B25

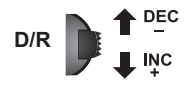


CH2

STEERING DUAL RATES(D/R-CH1)

Use this function to adjust the steering travel of your model. If the model understeers while cornering, add steering by pressing the lower side of the D/R button. When the model oversteers, take away steering by pressing the upper side of the D/R button.

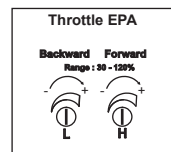
Steering D/R Lever



THROTTLE END POINT ADJUSTMENT(EPA-CH2)

This function is used to adjust the forward and brake side servo travel. Each direction can be adjusted independent of each other. Use this feature to set the throttle servo travel.

⚠ Be sure that your throttle linkage does not apply excessive force to the servo. If your linkage installation causes an unreasonable amount of force to be applied to the servo, the servo may be damaged and result in loss of control.



TRANSMITTER AND RECEIVER BINDING

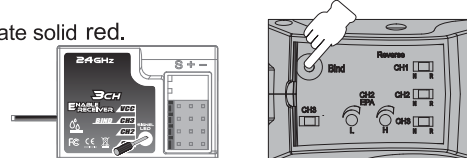
The Binding function allows you to Bind the transmitter and receiver pair. When new, it is necessary to pair the transmitter and receiver to prevent interference from radio controllers operated by other users. This operation is referred to as 'binding'. Once the binding process is complete, the setting is remembered even when the transmitter and receiver are turned OFF. Therefore, this procedure usually only needs to be done once.

⚠ Before beginning the binding process, connect the switch harness, servos, and the receiver battery to your **MT-300RX** 3-Channel receiver, using the diagram on page 5. Make sure that both the transmitter and the receiver are turned OFF.

- 1) Turn the transmitter ON. The Power Indicator on the transmitter will illuminate solid red.
- 2) Press and hold the receiver setup button, then turn the power switch on the ON position. The receiver LED will flash quickly. Release the setup button after 1 second.
- 3) Press and hold the binding button on the transmitter for 1 second until the LED on the receiver is continuously lit.

⚠ When the binding process is successful, the Bind LED on the receiver will stay solid red when both the transmitter and receiver are turned ON. If the Bind LED on the receiver is flashing rapidly or not illuminated at all, the transmitter and receiver are not paired. In this case, turn both the transmitter and receiver OFF, then repeat the binding process.

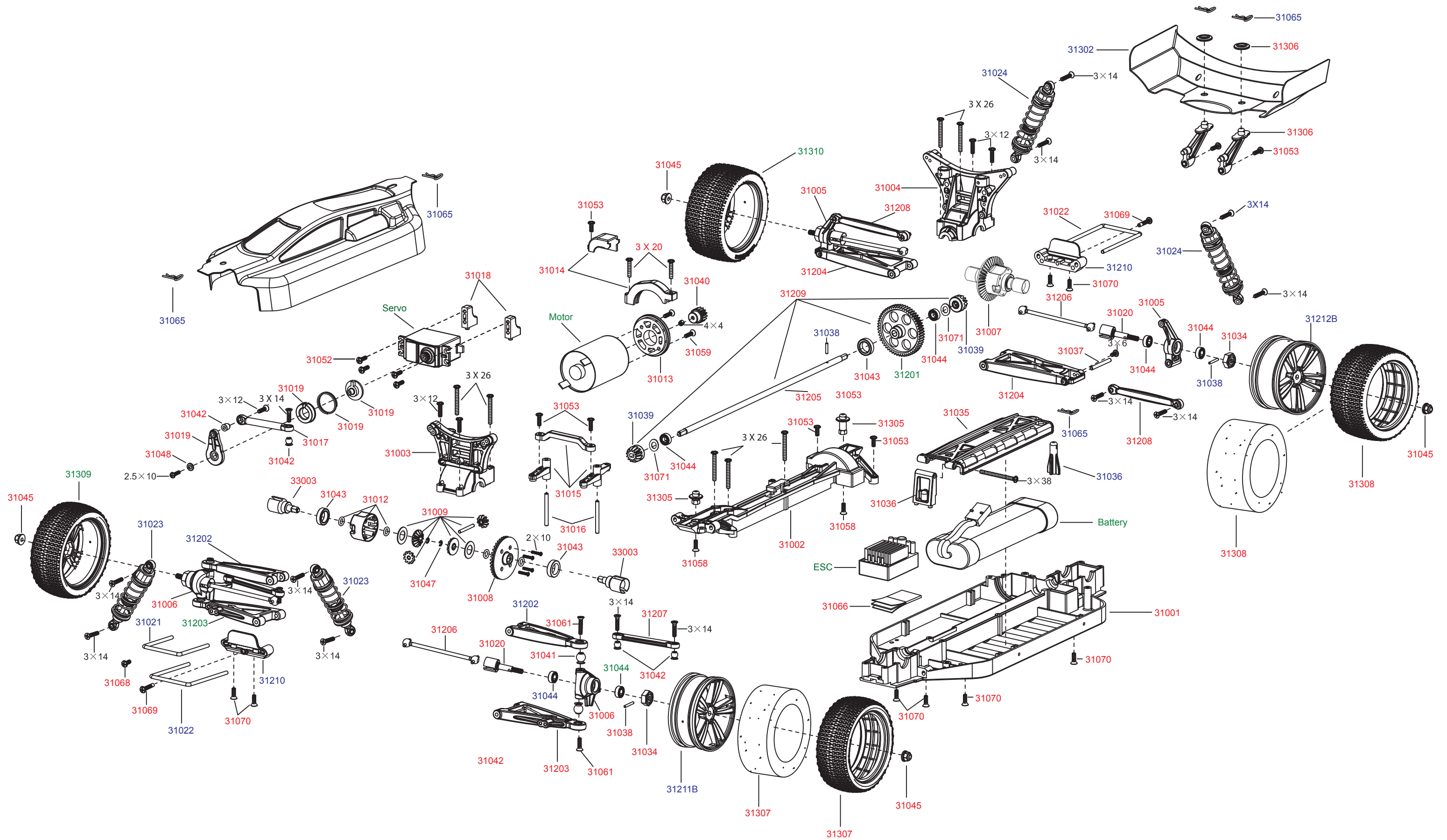
⚠ Under some circumstances, the receiver may not operate after turning the transmitter and receiver ON. If this occurs, perform the binding process again.



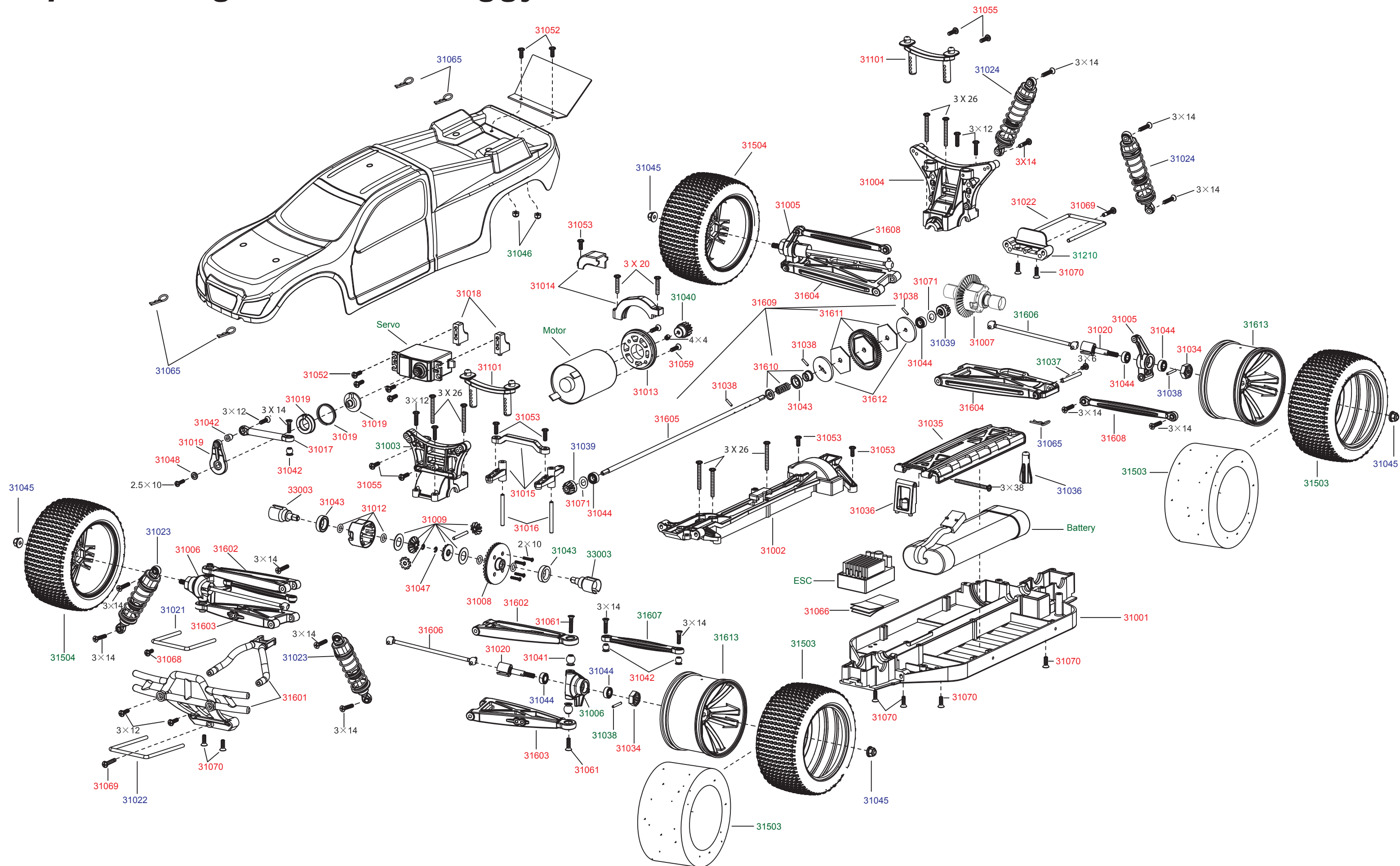
Please note the setup must be based on pair procedure well.

1. Turn the power switch on the transmitter & receiver to the ON position, the LED on transmitter & receiver are continuously lit.
2. Move the steering wheel or throttle trigger to the position where you want the servo to move, press and hold the receiver setup button for 2 second until the red LED on the receiver flash slowly, then press and hold the receiver setup button again within 5 seconds (Note: after 5 seconds F/S setup will reset, you have to start over at step one above) until the receiver LED is continuously lit, that's mean the F/S function has been correctly set.
3. Verify if the failsafe function has been correctly set. Turn off the transmitter, then check if the servos moves to the position that you set.
4. Any new binding (pair procedure) will clear the preset Fail-Safe.

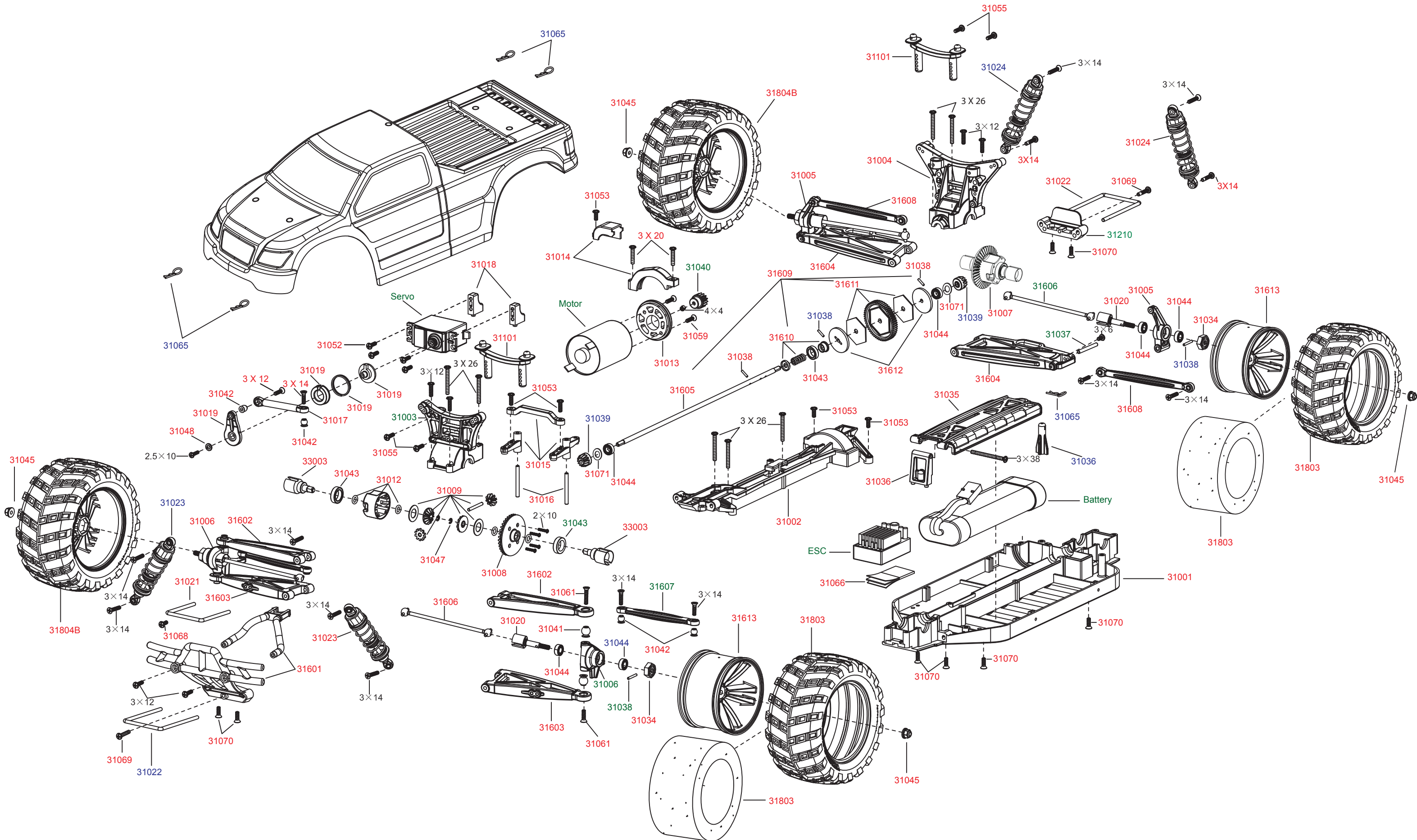
Explode Diagram of the Buggy



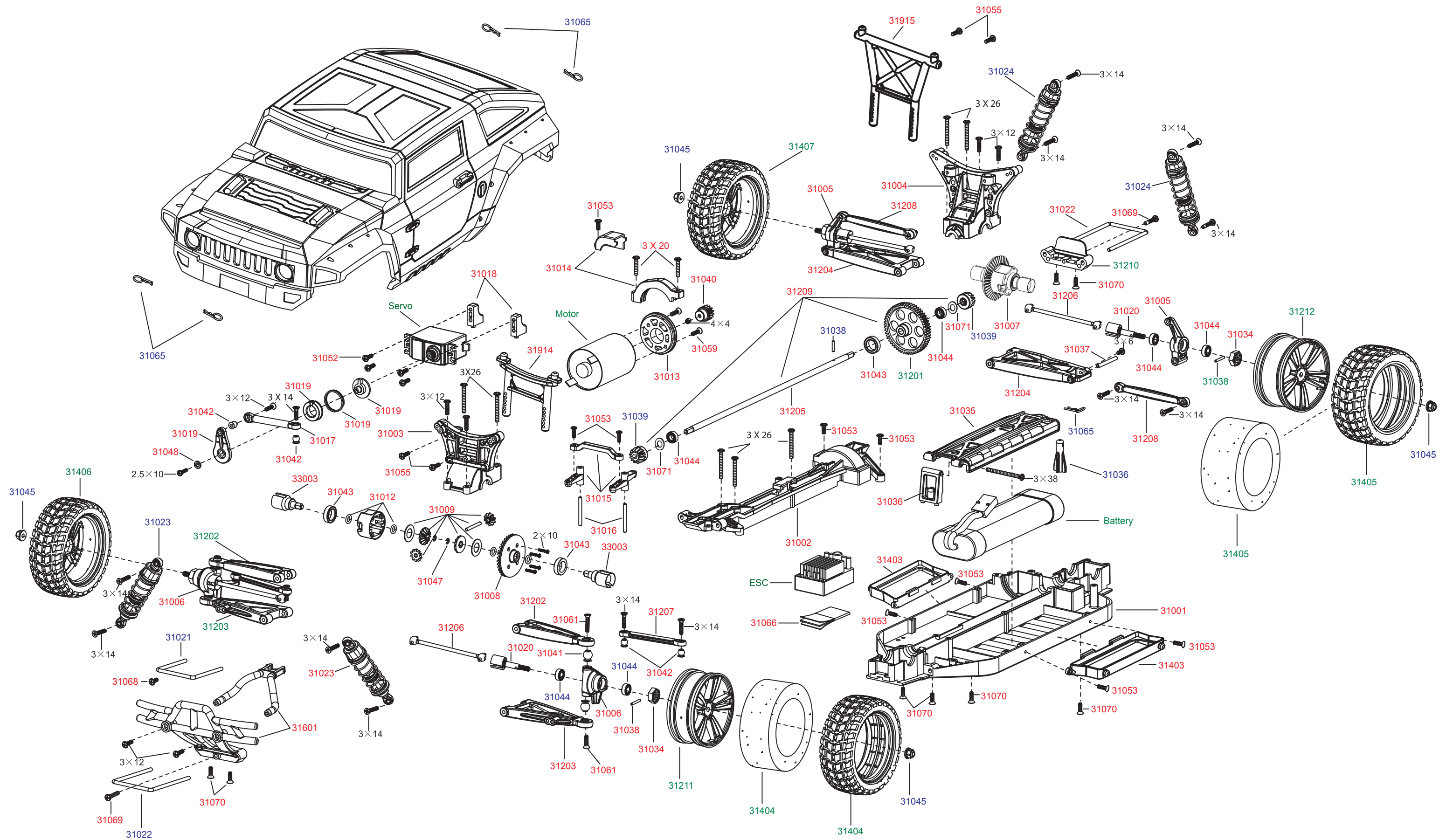
Explode Diagram of the Truggy



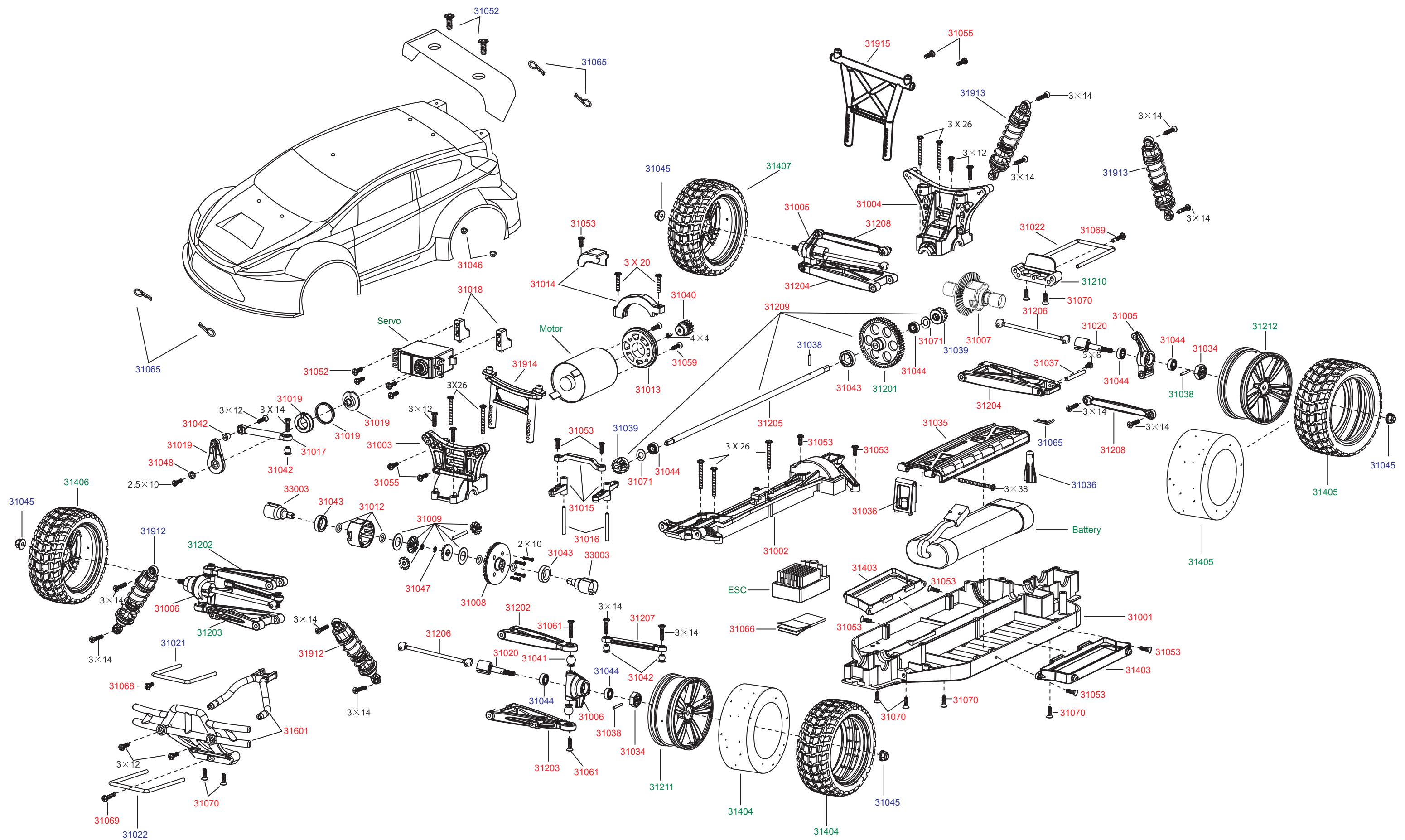
Explode Diagram of the Truck



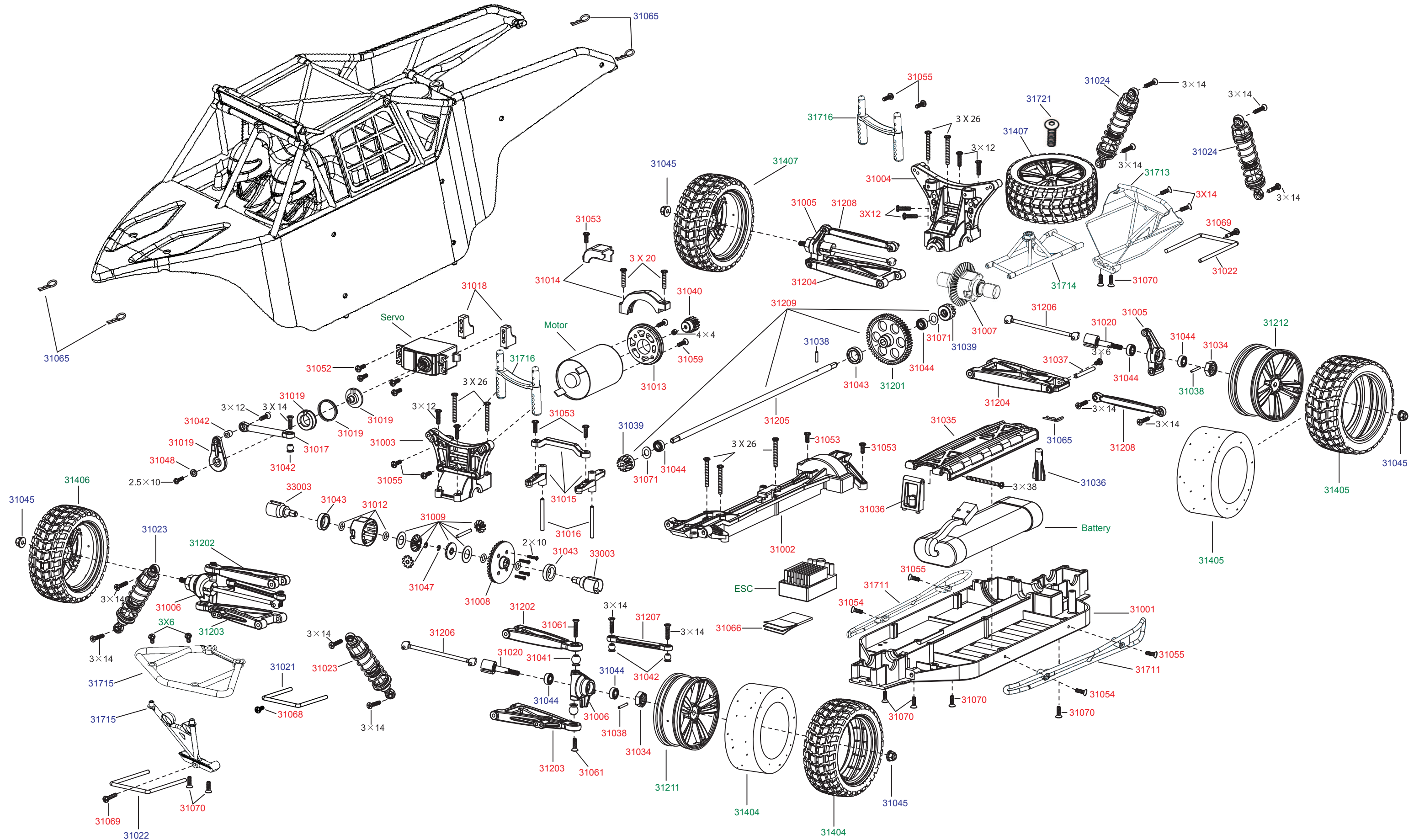
Explode Diagram of the Hummer



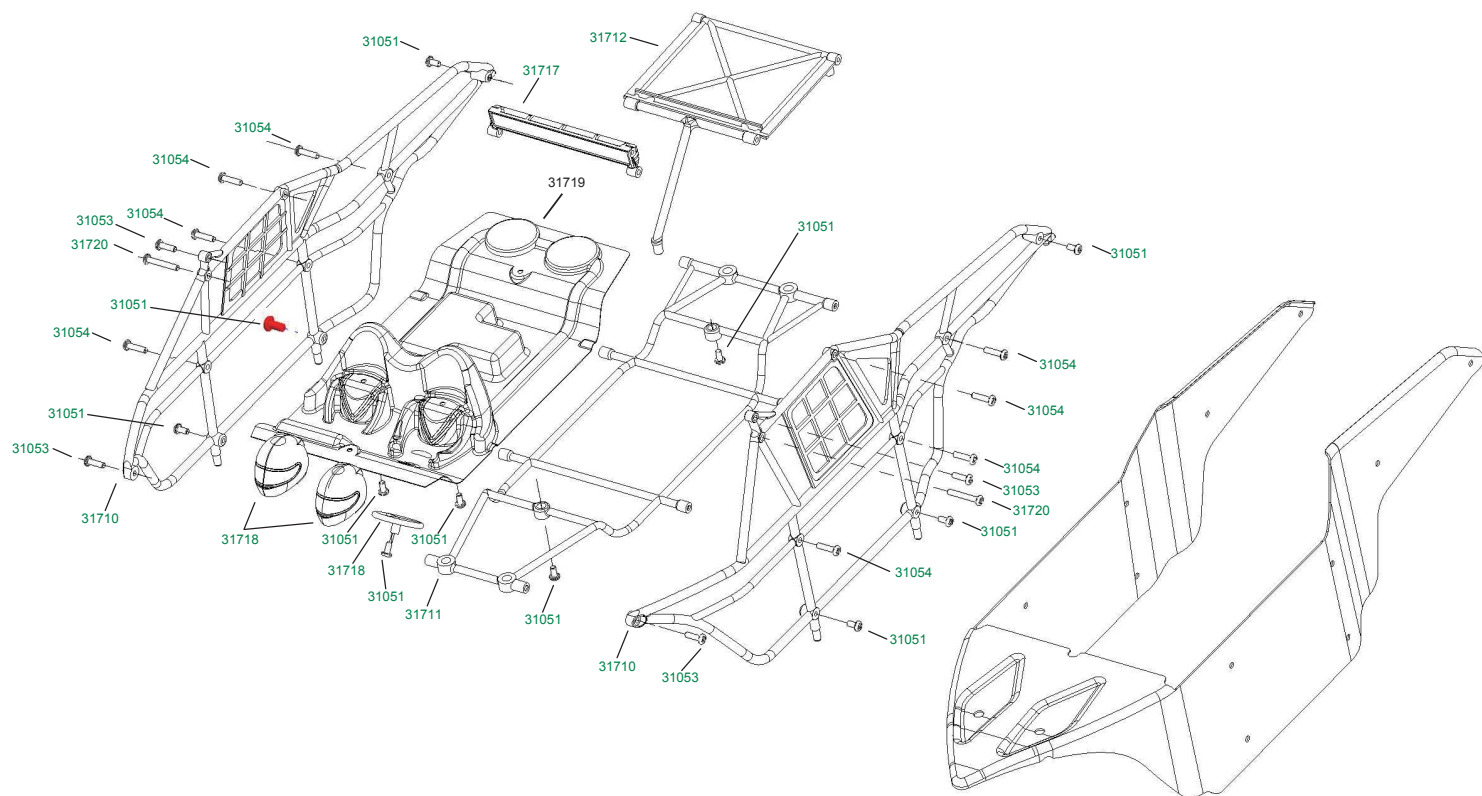
Explode Diagram of the Rally Car



Explode Diagram of the Desert Buggy



Explode Diagram of the Desert Buggy



Service and Maintenance

In order not to void car warranty, always keep your buggy clean. In areas of high dust and dirt, be sure to blow off dirt and dust with a compressor, soft bristle brush, or toothbrush.

Always check car for loose or broken parts and replace before and after running.

Regularly check screws to make sure that they are tight.

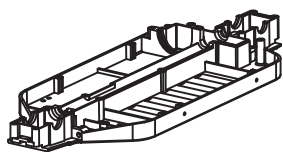
Replacement parts are available at many local retailers or online stores. Feel free to contact retailers for help in replacing parts.

SPECIFICATIONS

Model	Code	Length	Width	Height	Wheelbase	Wheel Dia.	Wheel Width	Gear Ratio
BUGGY	E10XB	409mm	256mm	139mm	288mm	85mm	254mm	9.6
TRUCK	E10MT	422mm	335mm	163mm	296mm	116mm	332mm	11.7
TRUGGY	E10XT	432mm	330mm	144mm	296mm	106mm	329mm	10.9
SHORT COURSE	E10SC	453mm	256mm	144mm	288mm	90mm	254mm	10.2
MONSTER TRUCK	E10BP	440mm	335mm	260mm	296mm	116mm	332mm	11.7
DESERT BUGGY	E10DB	500mm	256mm	190mm	288mm	90mm	254mm	10.2
HUMMER	E10HM	420mm	253mm	180mm	288mm	90mm	254mm	10.2
RALLY CAR	E10XR	520mm	260mm	175mm	288mm	90mm	254mm	10.2

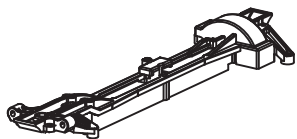
STANDARD PARTS LIST

31001



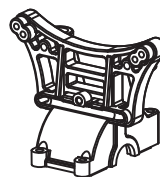
Chassis

31002



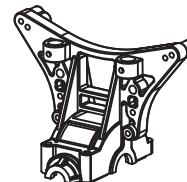
Upper Deck

31003



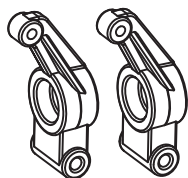
Front Shock Tower

31004



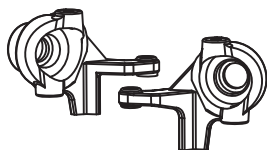
Rear Shock Tower

31005



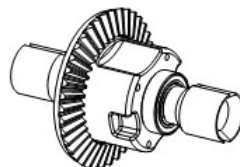
Rear Hub

31006



Knuckle Arms

31007



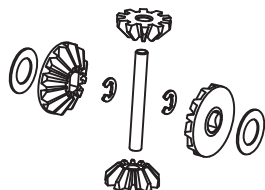
F/R Differential Gear

31008



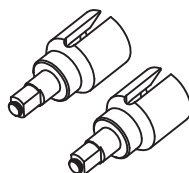
Differential Crown Gear 38T and Sealing

31009



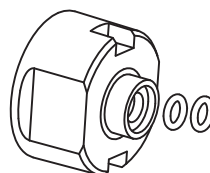
Differential Bevel Gear

33003



Differential Outdrives

31012



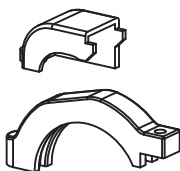
Differential Case and Sealing

31013



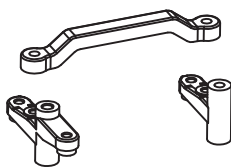
Motor Mount

31014



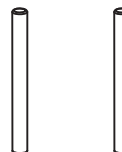
Motor Support Mount

31015



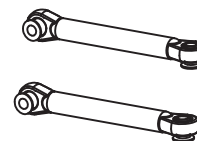
Front Servo Saver Arm

31016



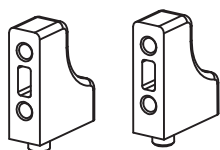
Steering Shaft

31017



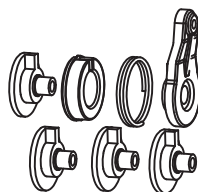
Servo Steering Linkage

31018



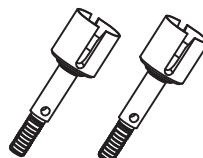
Servo Mounts

31019



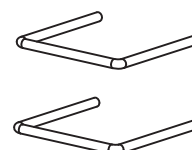
Servo Savers

31020



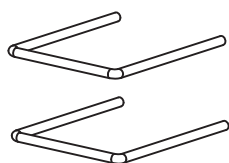
Wheel Axle

31021



Upper Hinge Pin

31022



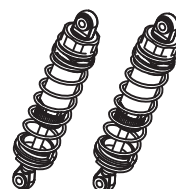
Lower Hinge Pin

31023



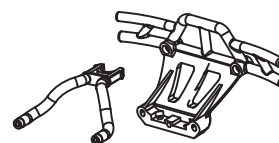
Front Shock Absorber
(Not Suitable for XR)

31024



Rear Shock Absorbers
(Not Suitable for XR)

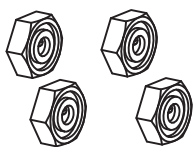
31601



Bumper
(Not Suitable for Desert Buggy/Buggy)

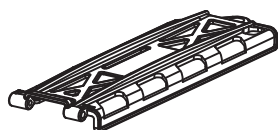
STANDARD PARTS LIST

31034



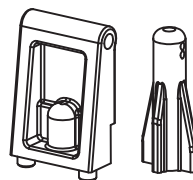
Wheel Nuts

31035



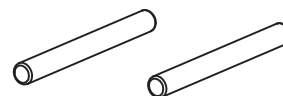
Battery Tray

31036



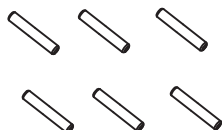
Battery Posts

31037



Lower Hinge Pin

31038



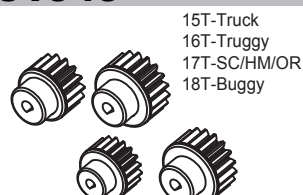
Pins 2X10

31039



Differential Pinion Gear

31040



Nylon Pinion Gears
15T,16T,17T,18T

31041



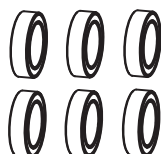
Ball Head (8.0mm)

31042



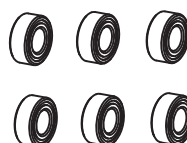
Ball Head (5.80mm)

31043



Ball Bearings 15X10X4

31044



Ball Bearings 10X5X4

31045



Lock Nuts M4

31046



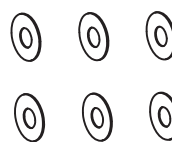
Lock Nuts M3

31047



E-Clips 2.5

31048



Shims 7.9X3.3X0.5

31049



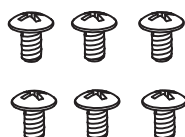
Button Head Screws 2X10

31050



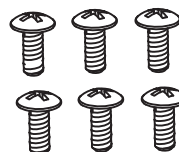
Button Head Screws 2.5X10

31051



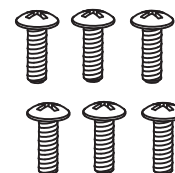
Button Head Screws 3X6

31052



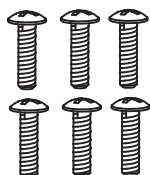
Button Head Screws 3X8

31053



Button Head Screws 3X10

31054



Button Head Screws 3X12

31055



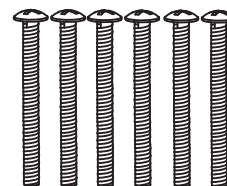
Button Head Screws 3X16

31056



Button Head Screws 3X26

31057



Button Head Screws 3X38

STANDARD PARTS LIST

31058



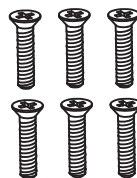
Flat Head Screws 3X8

31059



Flat Head Screws 3X12

31060



Flat Head Screws 3X14

31061



Flat Head Screws 3X16

31062



Grub Screws M3X3

31063



Grub Screws M4X4

31064



Plastic Cable Ties

31065



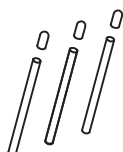
Body Clips

31066



Foam Double Side Tape

31067



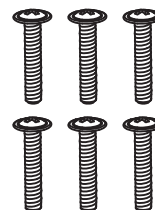
Antenna Pipe

31068



Cap Head Screws 3X8 6P

31069



Cap Head Screws 3X16 6P

31070



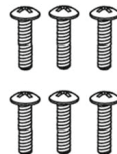
Flat Head Screws 3X10 6P

31071



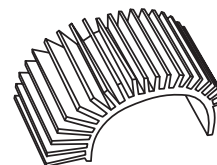
Shims 9 X 5.1 X 0.8

31720



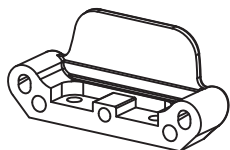
Button Head Screw 3X20

03300



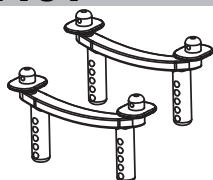
Motor Heat Proof Cover

31210



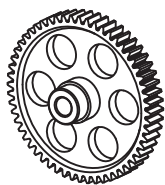
Susp Hinge Pin Holder
(Not Suitable for Desert Buggy)

31101



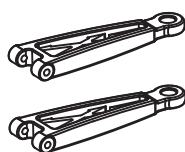
Body Mount for Trucks
(Not Suitable for DB/XB/HM/XR/BP)

31201



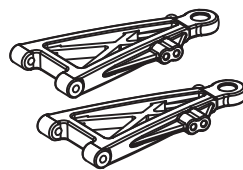
Main Gear 56T

31202



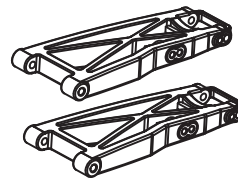
Front Upper Susp Arm

31203



Front Lower Susp Arm

31204



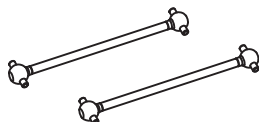
Rear Lower Susp Arm

31205



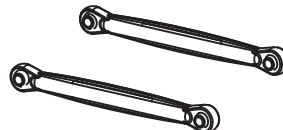
Alum Center Driveshaft

31206



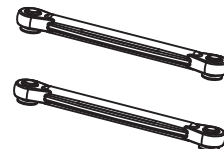
Dogbone (77.3mm)

31207



Steering Linkage

31208



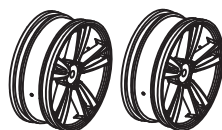
Rear Upper Linkage

31209



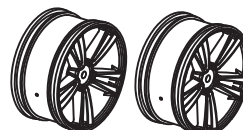
Center Driveshaft Complete with Gear

31211



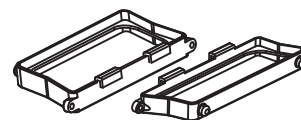
Front Wheel

31212



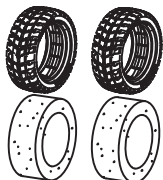
Rear Wheel

31403



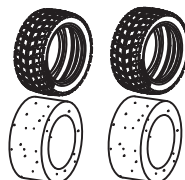
Side Body Mounts for SC , HM , XR

31404



Front Tires for SC, DB , HM , XR

31405



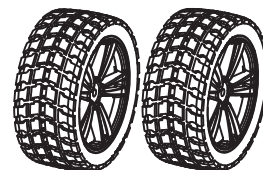
Rear Tires for SC, DB , HM , XR

31406



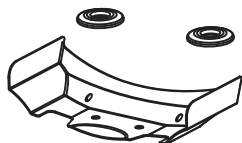
Front Tires and Rims for SC, DB , HM , XR

31407



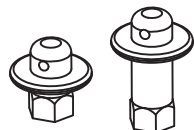
Rear Tires and Rims for SC, DB , HM , XR

31302



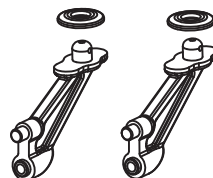
Wing for Buggy

31305



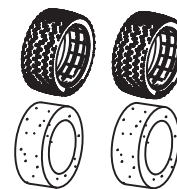
Buggy Body Mount

31306



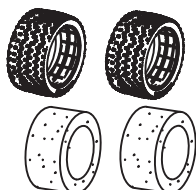
Buggy Wing Support

31307



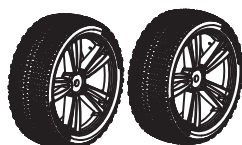
Buggy Front Tires

31308



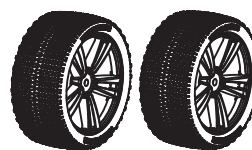
Buggy Rear Tires

31309



Front Tires and Rims For Buggy

31310



Rear Tires and Rims For Buggy

DESERT BUGGY

31700



Desert Buggy Body(Blue)

31701



Desert Buggy Body(Red)

31702



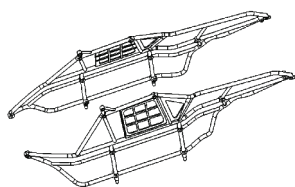
Desert Buggy Body(Clear)

31703



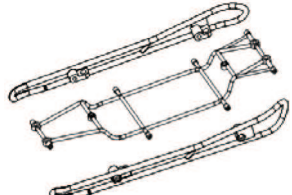
Desert Buggy Body(Plain Red)

31710



Side Roll Cage L&R

31711

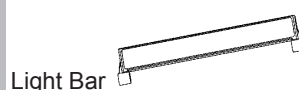


Roll Cage Center and Side Rails

31712

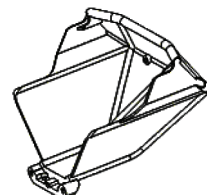


31717



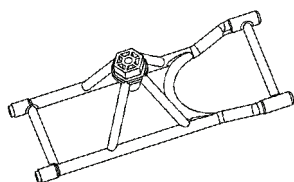
Light Bar

31713



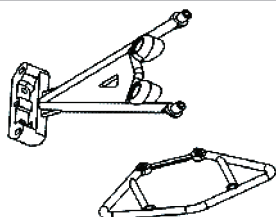
Rear Pod

31714



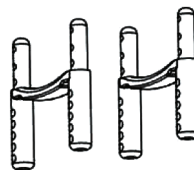
Roll Cage Rear Holder

31715



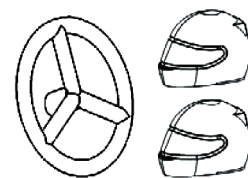
Roll Cage Front Bumper with Brace

31716



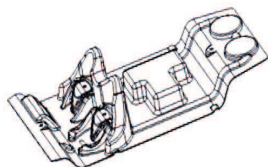
Body Post

31718



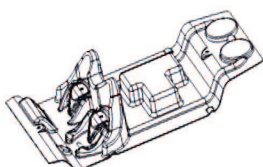
Driver Helmet and Steering Wheel Set

31719BK



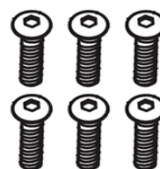
Cockpit(Black)

31719BL



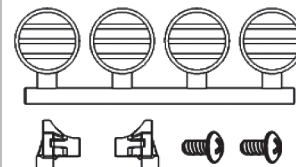
Cockpit(Blue)

31721



Flat Head Screw 4X20

31722B



Optional LCD Light Set (Black)

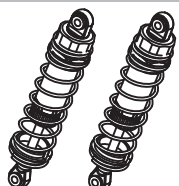
HUMMER, RALLY CAR

31912



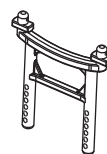
Front Shock Absorber (XR Only)

31913



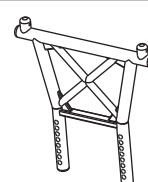
Rear Shock Absorbers (XR Only)

31914



Front Body Post (HM/XR Only)

31915



Rear Body Post (HM/XR Only)

31916B



Hummer Body (Blue)

31916GY



Hummer Body (Grey)

31916GD



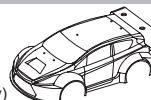
Hummer Body (Gold)

31916CL



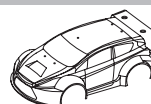
Hummer Body (Clear)

31920G



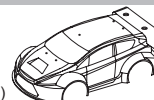
Rally Car Body (Grey)

31920R



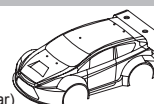
Rally Car Body (Red)

31920B



Rally Car Body (Blue)

31920CL



Rally Car Body (Clear)

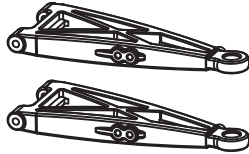
TRUGGY, TRUCK, MONSTER TRUCK

31602



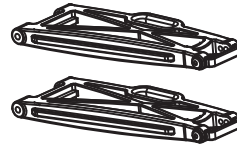
Front Upper Susp Arm

31603



Front Lower Susp Arm

31604



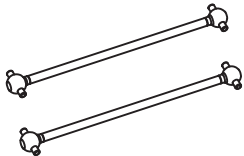
Rear Lower Susp Arm

31605



Alum Center Driveshaft

31606



Dogbone (97.2mm)

31607



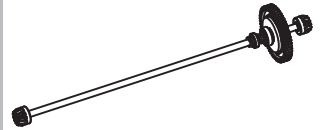
Steering Linkage

31608



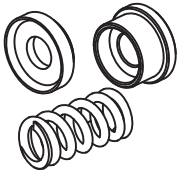
Rear Upper Linkage

31609



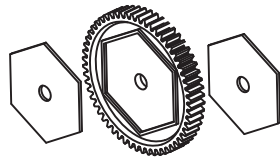
Slipper Clutch Complete with Gear

31610



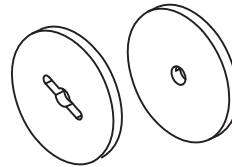
Spring Mount

31611



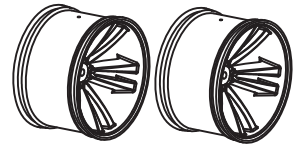
Main Gear 56T and Slipperpads

31612



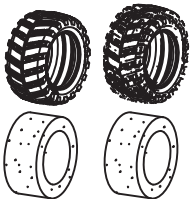
Slipper Plates

31613



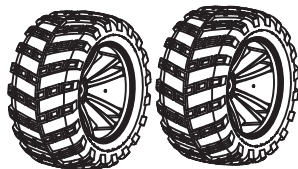
Wheels

31803



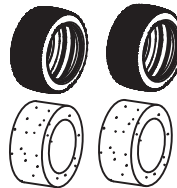
Tires for Truck/Monster truck

31804



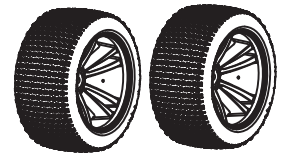
Tires and Wheels for Truck/Monster truck

31503



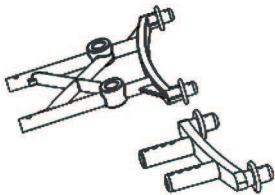
Tires for Truggy

31504



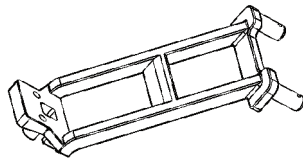
Tires and Wheels for Truggy

31910



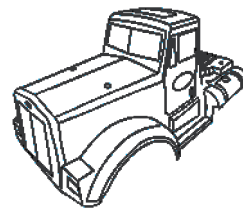
Body Post F&R (Monster truck)

31911



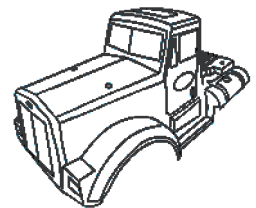
Front Brace (Monster truck)

31900



Monster truck Body (Blue)

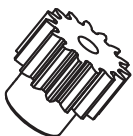
31901



Monster truck Body (Red)

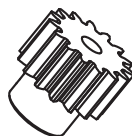
OPTIONAL GEAR

11170



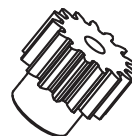
0.8 Module Copper Motor Gear (15T)

11171



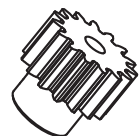
0.8 Module Copper Motor Gear (16T)

11177



0.8 Module Copper Motor Gear (17T)

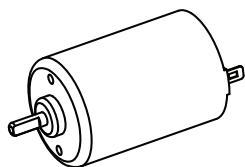
11178



0.8 Module Copper Motor Gear (18T)

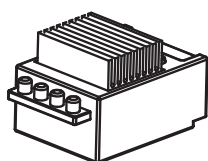
ELECTRONICS

03016



RC550 Motor

03018



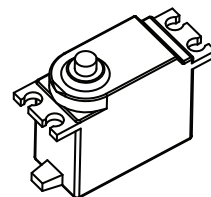
High power ESC

2601



Power Connector For
Banana Plug

SERVO3KG



3Kg Servo Unit

03014



Battery Pack w/Tamya Plug
(7.2V, 2000mAh)

03014B



Battery Pack w/Banana Plug
(7.2V, 2000mAh)

03019B



Battery Pack w/Banana Plug
(7.2V, 3000mAh) (Optional)

E020

US Standard

E021

EU Standard

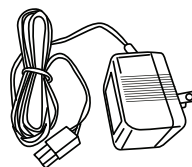
E022

AU Standard

E023

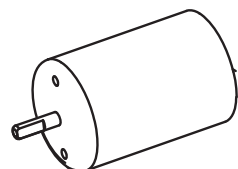
UK Standard

NI-MH Battery Charger



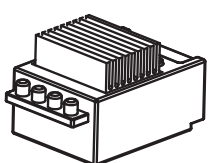
ELECTRONICS FOR BRUSHLESS VERSION

E028



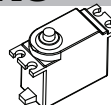
Brushless Motor

E199



Brushless ESC

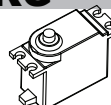
SERVO3KG



3Kg Servo Unit

SERVO6KG

For E10XTL
E10MTL Only
6Kg Servo Unit

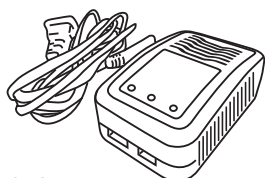


LP7420



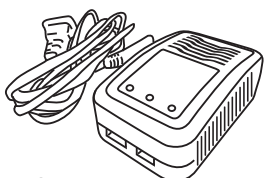
Li-Po Battery
(7.4 V 2000mAh 2S 25C)

A3US



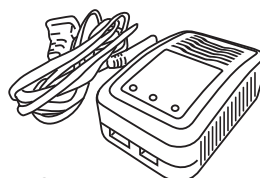
US Standard
LiPo Balance Charger

A3EU



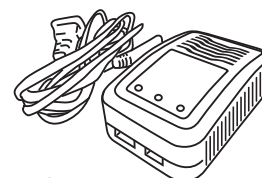
EU Standard
LiPo Balance Charger

A3AU



AU Standard
LiPo Balance Charger

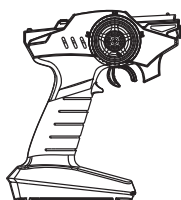
A3UK



UK Standard
LiPo Balance Charger

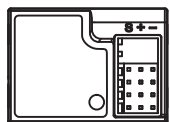
TRANSMITTER & RECEIVER

MT-300TX



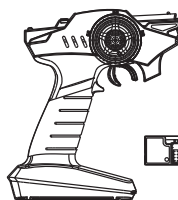
2.4 Ghz Transmitter

MT-300RX



4channels 2.4G Receiver

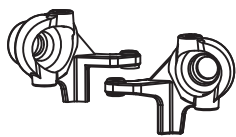
MT-300



2.4 Ghz Radio Set

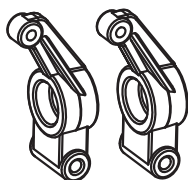
OPTIONAL STANDARD PARTS

33001



Alum Knucle Arm

33002



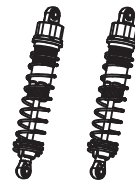
Alum Rear Hub

33005



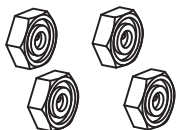
Alum Front Shock Absorber

33006



Alum Rear Shock Absorber

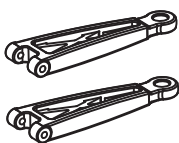
33009



Alum Wheel Hub

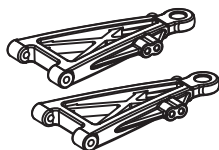
OPTIONAL PARTS SC, XB, DB, HM, XR

33201



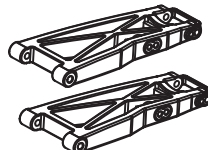
Alum Front Upper Susp Arm

33202



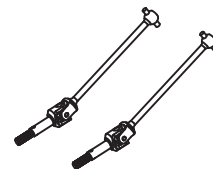
Alum Front Lower Susp Arm

33203



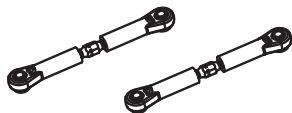
Alum Rear Lower Susp Arm

33204



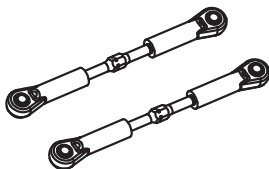
F/R Universal Shaft

33205

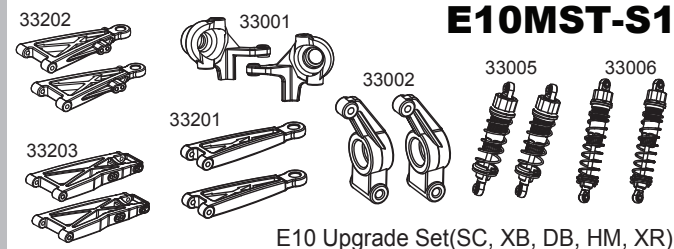


Alum Steering Linkage

33206



Alum Rear Upper Linkage



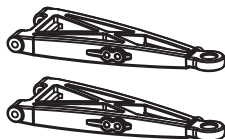
OPTIONAL PARTS TRUGGY, TRUCK, MONSTER TRUCK

33601



Alum Front Upper Susp Arm

33602



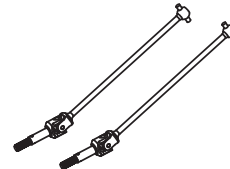
Alum Front Lower Susp Arm

33603



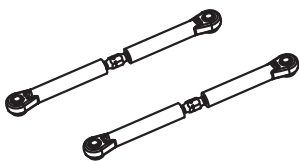
Alum Rear Lower Susp Arm

33604



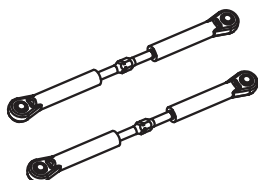
F/R Universal Shaft

33605

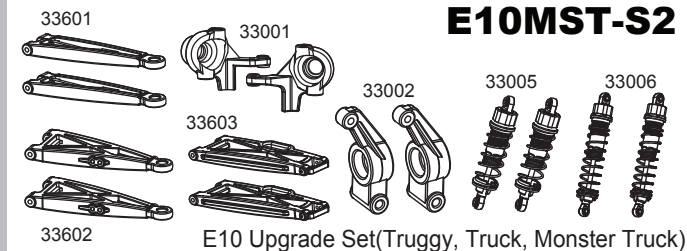


Alum Steering Linkage

33606



Alum Rear Upper Linkage



31300



Buggy Body (Blue)

31400



Short Course Body (Blue)

31800



Truck Body (Blue)

31500



Truggy Body (Blue)

31301



Buggy Body (Red)

31401



Short Course Body (Red)

31801



Truck Body (Red)

31501



Truggy Body (Red)

31311



Buggy Body (Green)

31408



Short Course Body (Green)

31805



Truck Body (Green)

31505



Truggy Body (Green)

31312



Buggy Body (Blue)

31409



Short Course Body (Blue)

31806



Truck Body (Blue)

31506



Truggy Body (Blue)

31313



Buggy Body (Black)

31410



Short Course Body (Black)

31807



Truck Body (Black)

31507



Truggy Body (Black)

31303



Transparent Buggy Body

31402



Transparent Short Course Body

31802



Transparent Truck Body

31502



Transparent Truggy Body

**1/10TH SCALE
ELECTRIC OFF-ROAD
BUGGY/SHORT COURSE/
TRUCK/DESERT BUGGY
TRUGGY/MONSTER TRUCK
HUMMER/ON ROAD CAR**